

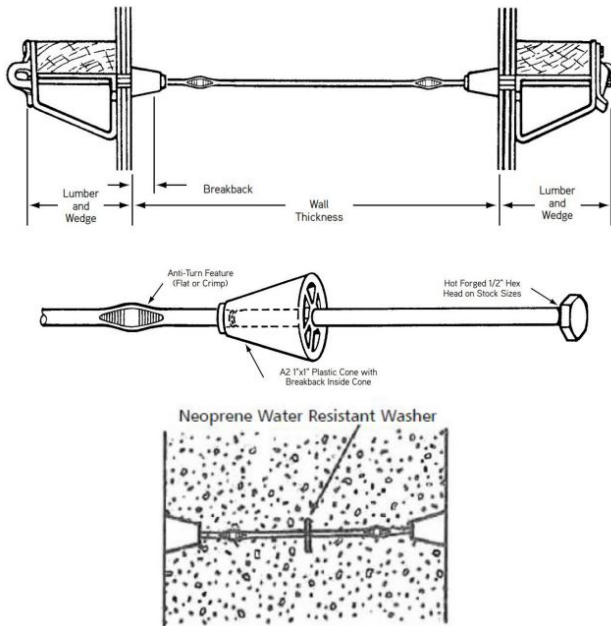
TECHNICAL DATA SHEET

DESCRIPTION

A3 Standard Snap Tie is manufactured with either hot or cold forged integral heads and is equipped with flats or crimps to prevent turning in the concrete during breakback operations. Coating the tie with wax will aid in breakback operation.

APPLICATION

Used for handset wood wall forming.



RELATED PRODUCTS

- A2 Plastic Cone
- A16 Omni Wedge
- A81 Jahn® "A" Bracket
- A82 Jahn® "C" Bracket

HOW TO ORDER

Additional sizes and materials are available made to order. Please call for availability, lead time and pricing.

FEATURES

- 2,250 lbs. SWL
- Available in any length from 6" to 480"
- Available with plastic cone, metal cone, metal spreader, flat fixed washer or cupped loose washer
- Can be manufactured with a tight fitting neoprene washer located near the center of tie to eliminate water seepage along the tie

INSTALLATION

1. Drill holes in plywood 1/8" larger than the snap tie head (usually 5/8" diameter drill bit will be required)
2. Place the ends of snap ties through the holes in the plywood
3. Place the bracket (Jahn® "A", Jahn® "C" or Omni wedge) on the tie
4. The proper tie head position is at the midpoint or higher of the Omni wedge slot. Correct spacing between double wales is 5/8" to 3/4"
5. Jahn® "A" bracket is utilized to hold a single wale and can be installed before or after the wales have been positioned

TECHNICAL DATA SHEET

ORDERING INFORMATION

A3 SNAP TIES - W/ A2 1" X 1" PLASTIC CONES

Product Code	Description	Weight
14538	A3A2 STD - 8 X 1-1/16 L&W - W/ 1" X 1" PLASTIC CONE	0.170 LB
14542	A3A2 STD - 12 X 1-1/16 L&W - W/ 1" X 1" PLASTIC CONE	0.220 LB
15420	A3A2 STD - 6 X 1-3/16 L&W - W/ 1" X 1" PLASTIC CONE	0.150 LB
15423	A3A2 STD - 8 X 1-3/16 L&W - W/ 1" X 1" PLASTIC CONE	0.180 LB
15426	A3A2 STD - 10 X 1-3/16 L&W - W/ 1" X 1" PLASTIC CONE	0.200 LB
15429	A3A2 STD - 12 X 1-3/16 L&W - W/ 1" X 1" PLASTIC CONE	0.220 LB
15401	A3A2 STD - 6 X 1-5/8 L&W - W/ 1" X 1" PLASTIC CONE	0.160 LB
15407	A3A2 STD - 8 X 1-5/8 L&W - W/ 1" X 1" PLASTIC CONE	0.190 LB
15413	A3A2 STD - 10 X 1-5/8 L&W - W/ 1" X 1" PLASTIC CONE	0.210 LB
15419	A3A2 STD - 12 X 1-5/8 L&W - W/ 1" X 1" PLASTIC CONE	0.230 LB
15550	A3A2 STD - 6 X 5-1/8 L&W - W/ 1" X 1" PLASTIC CONE	0.240 LB
15552	A3A2 STD - 8 X 5-1/8 L&W - W/ 1" X 1" PLASTIC CONE	0.270 LB
15554	A3A2 STD - 10 X 5-1/8 L&W - W/ 1" X 1" PLASTIC CONE	0.290 LB
15500	A3A2 STD - 30 X 8-1/4 L&W - W/ 1" X 1" PLASTIC CONE	0.554 LB
15498	A3A2 STD - 36 X 8-1/4 L&W - W/ 1" X 1" PLASTIC CONE	0.620 LB
15501	A3A2 STD - 42 X 8-1/4 L&W - W/ 1" X 1" PLASTIC CONE	0.720 LB
15525	A3A2 STD - 48 X 8-1/4 L&W - W/ 1" X 1" PLASTIC CONE	0.790 LB
15448	A3A2 STD - 30" X 4-3/4 L&W - W/ 1" X 1" PLASTIC CONE	0.520 LB
15056	A3A2 STD - 36" X 4-3/4 L&W - W/ 1" X 1" PLASTIC CONE	0.526 LB
16252	A3A2 HVY- 12" X 4-3/4" L&W - W/ 1" X 1" PLASTIC CONE	0.310 LB
144028	A3A2 HVY- 6" X 8-1/4" L&W - W/ 1" X 1" PLASTIC CONE	0.330 LB
16278	A3A2 HVY- 8" X 8-1/4" L&W - W/ 1" X 1" PLASTIC CONE	0.350 LB
16280	A3A2 HVY- 10" X 8-1/4" L&W - W/ 1" X 1" PLASTIC CONE	0.360 LB
16282	A3A2 HVY- 12" X 8-1/4" L&W - W/ 1" X 1" PLASTIC CONE	0.380 LB
16284	A3A2 HVY- 14" X 8-1/4" L&W - W/ 1" X 1" PLASTIC CONE	0.400 LB
16286	A3A2 HVY- 16" X 8-1/4" L&W - W/ 1" X 1" PLASTIC CONE	0.430 LB
16288	A3A2 HVY- 18" X 8-1/4" L&W - W/ 1" X 1" PLASTIC CONE	0.450 LB
16294	A3A2 HVY- 24" X 8-1/4" L&W - W/ 1" X 1" PLASTIC CONE	0.520 LB
144012	A3A2 HVY- 30" X 8-1/4" L&W - W/ 1" X 1" PLASTIC CONE	0.560 LB
144013	A3A2 HVY- 36" X 8-1/4" L&W - W/ 1" X 1" PLASTIC CONE	0.680 LB

MANUFACTURER

Dayton Superior Corporation
 1125 Byers Road
 Miamisburg, OH 45342
 Customer Service: 888-977-9600
 Technical Services: 877-266-7732
 Website: www.daytonsuperior.com

WARRANTY (ACCESSORIES)

Limited Warranty. Dayton warrants, for a period of 60 days from the date of shipment (three years from the date of shipment in the case of formwork, excluding any consumable Products included with such formwork), that Products and any associated application drawings and engineering services provided by Dayton ("Ancillary Services") will be free from defects in material and workmanship and, in the case of custom designed formwork, that the formwork will meet the specifications set forth in the design drawings approved by Dayton and Customer. Any claim under this warranty must be made in writing within such warranty period. If any Product and/or Ancillary Service covered by a timely claim are found to be defective, Dayton will, within a reasonable time, make any necessary repairs or corrections or, at Dayton's option, replace the Product. Unless pre-authorized by Dayton in writing, Dayton will not accept any charges for correcting defects or accept the return of any Product. This warranty will not apply to any Products that have been subjected to misuse, neglect, storage damage, misapplication, accident or any other damage caused by any person other than Dayton, or that have not been maintained in accordance with Dayton's specifications. THIS LIMITED WARRANTY IS IN LIEU OF ALL OTHER WARRANTIES AS TO THE PRODUCTS AND ANCILLARY SERVICES. DAYTON MAKES NO OTHER WARRANTIES OR GUARANTEES, EXPRESS OR IMPLIED, INCLUDING ANY WARRANTY OF MERCHANTABILITY, FITNESS FOR A PARTICULAR PURPOSE OR OTHERWISE. THE REMEDIES SET FORTH IN THIS SECTION ARE CUSTOMER'S EXCLUSIVE REMEDY FOR BREACH OF WARRANTY.